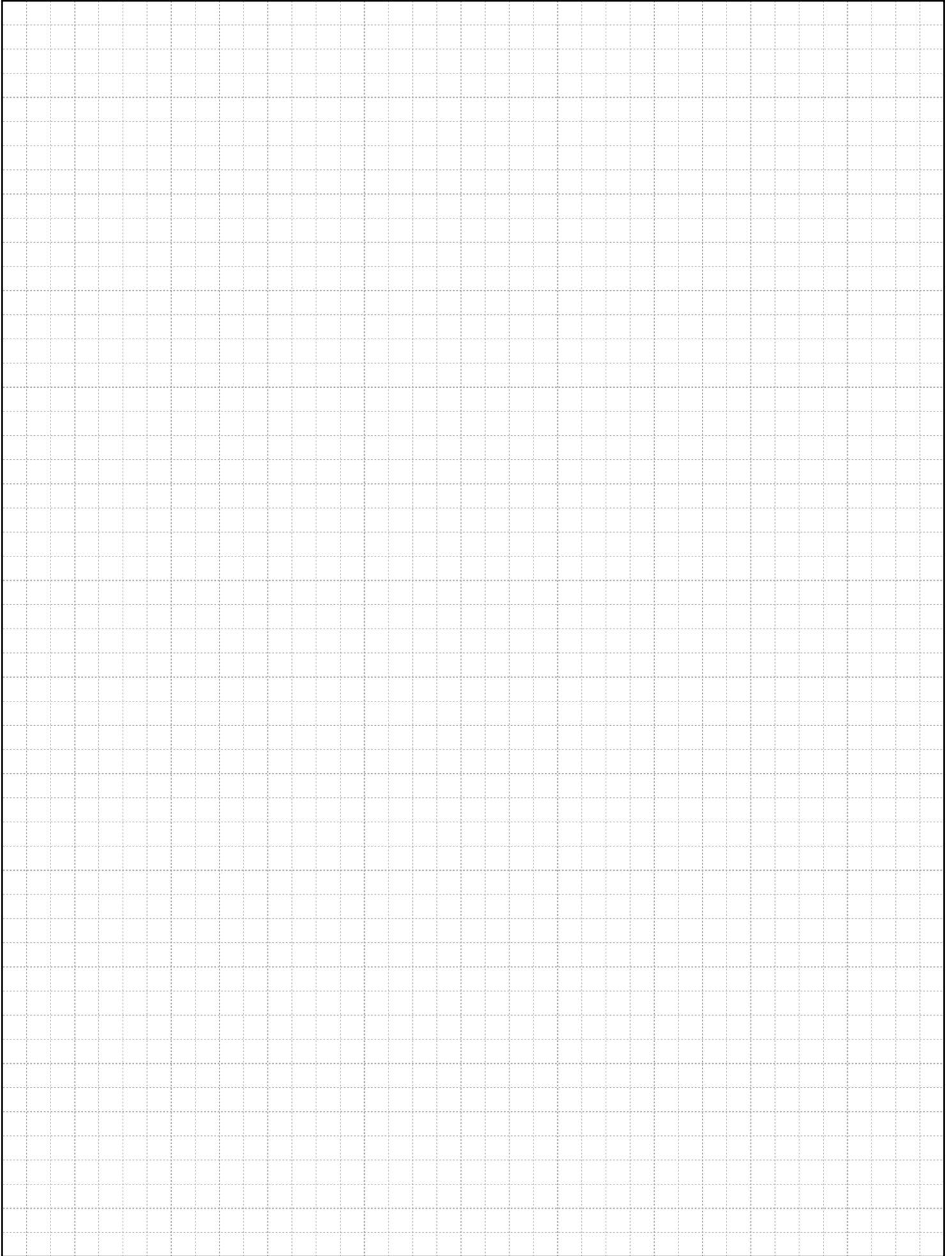


ESIPAK Planning Grid



GRID INSTRUCTIONS

- Carefully measure the room and write the dimensions of each wall on the plan fig1.
- Note precise positions and heights of anything important such as window positions, pipes, power for appliances and any other obstacles.
- Draw in cabinets fig 2. Be sure when marking cabinet positions that the sides of each unit doesn't

land on pipes or power points. Try to keep these items close to the centre of the appropriate cabinet.

- Once you have placed all your cabinets, you will need to position end panels. End panels are the same material as your doors and need to be placed on any seen ends fig 3.
- Mark handle location on the plan to determine which way the door is to be hung fig 4.

- Now draw in your bench tops and draw the direction of mitres fig 5. Ensure that sinks and hot plates don't go across mitres.
- Note standard bench top overhang is 20mm. If you are not sure what size to order bench tops with mitres, just send us your plan and we can work out sizes for you.

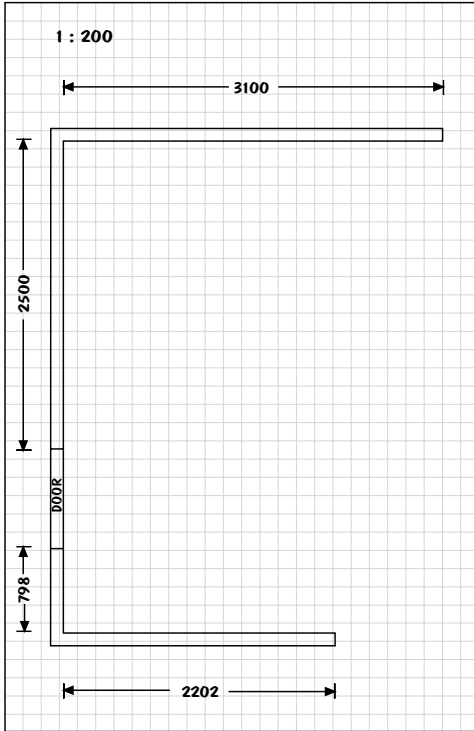


Fig. 1

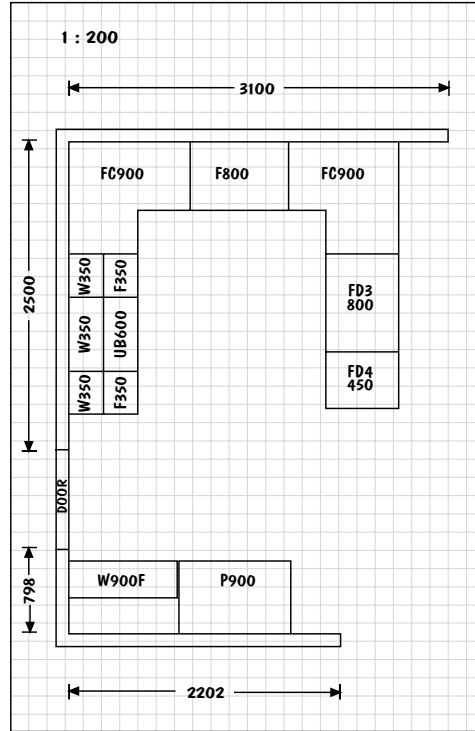


Fig. 2

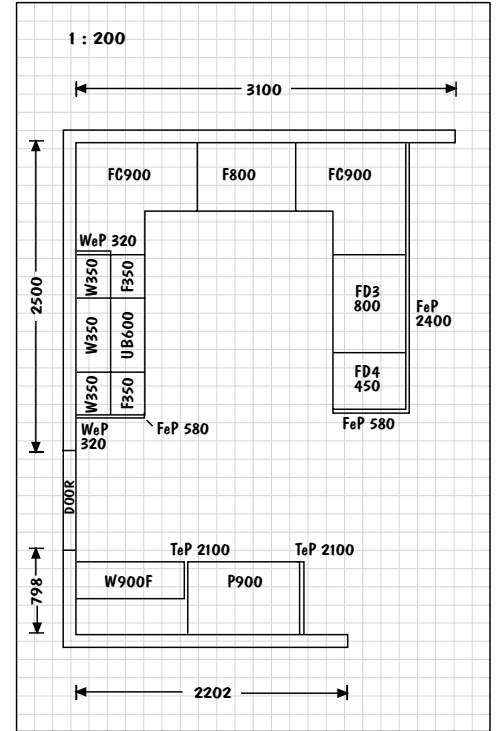


Fig. 3

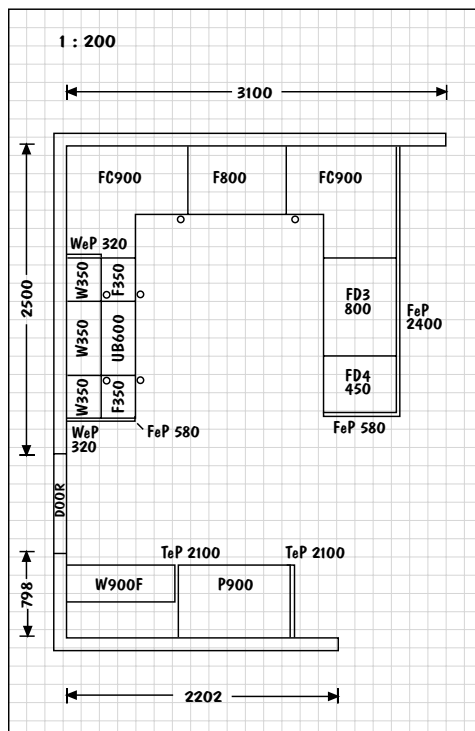


Fig. 4

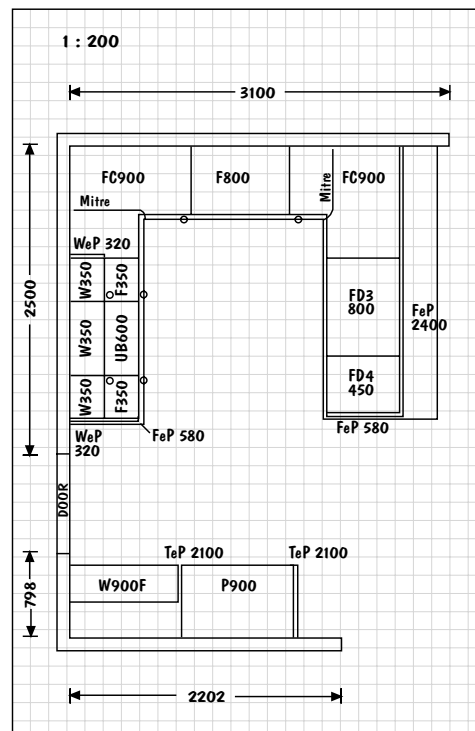


Fig. 5